



FOR FASCINATING PEOPLE

GENERAL CATALOGUE 2014 - 2015


ILFARI

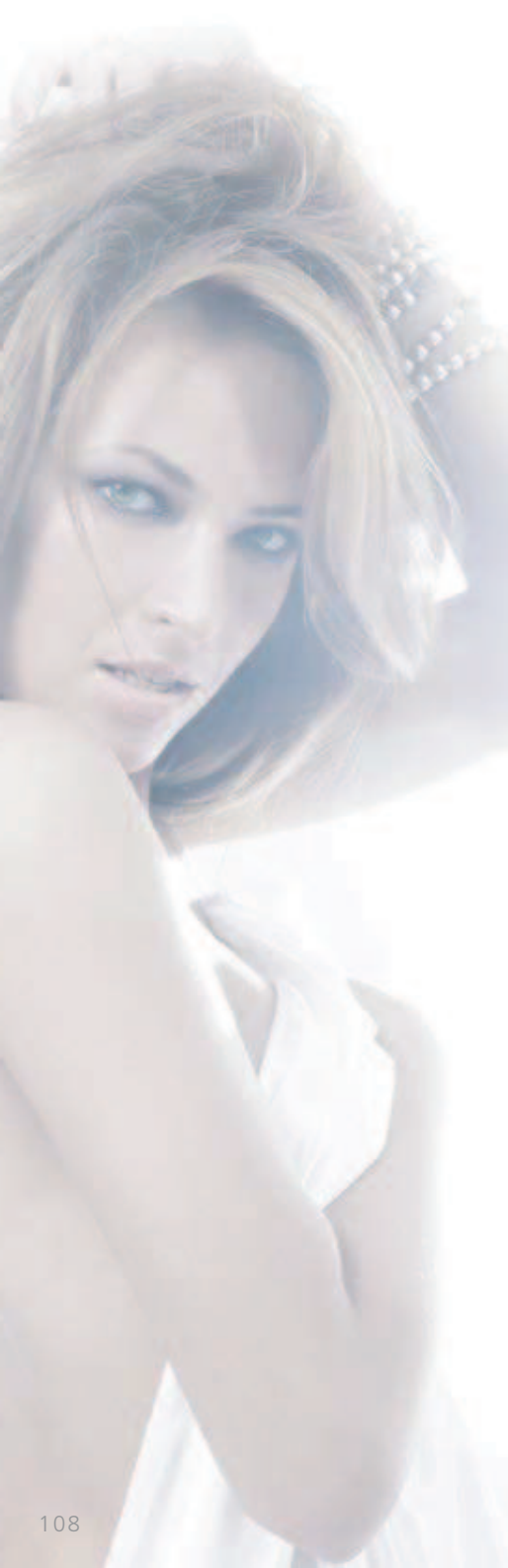


FROZEN EYES

design: Coen Munsters 2014



“Frozen Eyes” is a tribute to the 10th anniversary,
of the cooperation between
world’s most famous crystal house Swarovski
and Dutch lightdesign manufacturer Ilfari



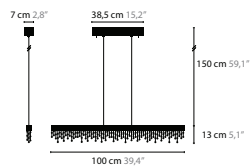
FROZEN EYES

design: Coen Munsters 2014

The glitter in eyes, frozen in sparkling crystals

FROZEN EYES

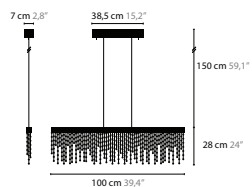
design: Coen Munsters 2014



FROZEN EYES H C

6480 / CRYSTAL
6480s / SWAROVSKI STRASS

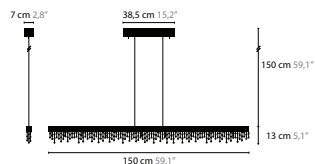
LED 18W / 12V
Colors: 00-01-02-05-16



FROZEN EYES H CXL

6481 / CRYSTAL
6481s / SWAROVSKI STRASS

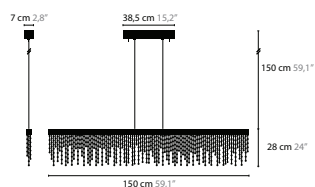
LED 18W / 12V
Colors: 00-01-02-05-16



FROZEN EYES HXL C

6482 / CRYSTAL
6482s / SWAROVSKI STRASS

LED 27W / 12V
Colors: 00-01-02-05-16



FROZEN EYES HXL CXL

6483 / CRYSTAL
6483s / SWAROVSKI STRASS

LED 27W / 12V
Colors: 00-01-02-05-16



With crystals extra large CXL